



# Annual Review 2019-2020

## Croydon Mencap March 2020

### Board Members

Chair	James Kiamtia-Cooper
Vice Chair	vacant
Treasurer	Louise Honeysett
Chief Executive and Company Secretary	Alan Avis
	David Congdon
	Tim Flood
	Amy Pollard
	John Rowe
	Richard Wragg
	Angelene Rackett
	Farzana Hayat

### Portland House

Chief Executive	Alan Avis
Operations Manager	Abigail White
Finance Officer	Carole Letchford
Administration and Communications Officer	Jo Ramsay
Carer's Assessment and Support Organiser	Sue Payne
Welfare and Rights Worker	Lloyd Thomas
Active Lives Manager	Yvonne Pennant-Taylor

### Clubs@Leslie Park Manager

Deputy Managers	Kat Edwards
Support Workers	Rebecca Perry-Bridgewater
	Emma Ouzman
	Tracy Gunaratnam
	Georgie Amroussi
	Anita Belcher
	Liz Psaila
	Jenny Shannon

### Chill and Chat

Coordinator	Christine Bush
Deputy Coordinator	Sue Payne

### The Saturday Club

Coordinator	Rory Goring
Support Worker	Nana Opoku-Acheampong
Support Worker	Hayley Archibald

### Monday Night Social Club

Coordinator	Aliye Beaton
The "A" Team	Toni Daws
	Rhiannon Edwards
	Daniel Collison
	Georgie Amroussi

### Croydon Mencap Ltd

Portland House 678 London Road

Thornton Heath CR7 7HU

Tel: 020 8684 5890

Email: [info@croydonmencap.org.uk](mailto:info@croydonmencap.org.uk)

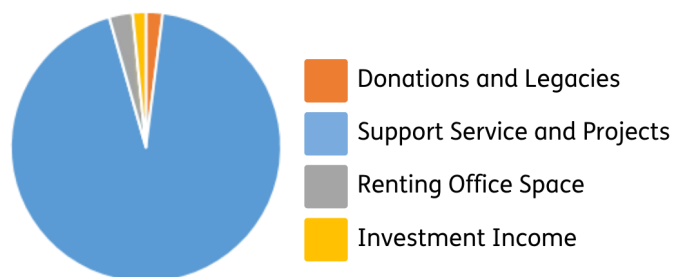
Website: [www.croydonmencap.org.uk](http://www.croydonmencap.org.uk)

## Thank you to all our Funders, Donors & Supporters

London Borough of Croydon  
Addiscombe Baptist Church  
H. Stain Ltd, Jewellers  
Mrs R McLuskey  
Mr and Mrs C Baker  
Mrs M Bryant  
Mrs Freda Pearce  
Sandilands Running Club  
The Alchemy Foundation  
The Prudential Small Donations Fund  
St Michael's & All Angels Church  
Total Security Installations Ltd  
The Fence Club

**In Memoriam donations,  
donations with subscriptions  
and all those individuals who  
have kindly and generously  
supported us in so many  
ways – thank you.**

### Proportions of funding we received April 2019 - March 2020



Registered Charity Number: 1073063  
Registered Company Number: 3628599

## Foreword by James Kiamtia-Cooper, Chair



Welcome to our Annual Review. I am delighted to report that Croydon Mencap enjoyed another successful year even though this was tainted at the year-end as the Covid-19 pandemic began to spread. Croydon Mencap with its readiness to accept new challenges and keep the welfare of people with learning disabilities and their families at the heart of all it does, immediately began to plan for the challenges of the year ahead.

During 2019 we welcomed a number of new team members. This enabled us to further re-shape and grow our provision at Leslie Park as well as introduce our new Active Lives programme to provide supported activities during the evenings and weekends, with the aim of providing people with learning disabilities with a greater choice about how they live their lives and spend their time.

We also successfully tendered for the renewal of our Carers Support contract with Croydon Council as well as winning new funding to enable people with learning disabilities to volunteer their time and talents to help make our local communities a better place for everyone.

All this was achieved by our staff and volunteers, who are simply amazing. On behalf of the Board of Trustees may I thank our staff and volunteers for their unstinting commitment and hard work, our colleagues in other organisations that work in partnership with us, and our service commissioners and donors that provide those much needed funds to make all of this possible.

## And from our CEO, Alan Avis...



It is very kind of James to thank our staff and volunteers for all that they do, but this is only possible because of the foresight and the strategies developed by our Board of Trustees who work quietly in the background, providing their time, experience and advice to support the operations of our charity.

I feel very privileged to lead such a fantastic staff and volunteer team, and to receive such good support from our Board.

In April 2019, the Board was pleased to welcome Farzana Hayat as a new Trustee. Farzana brings a range of skills, especially knowledge of autism, that further strengthen the Board.

In addition to providing our own services, which are described in more detail further on in this review, we are pleased to have been able to support other groups to contribute to the wellbeing of children and adults with learning disabilities in Croydon.



We continued to assist Down with It!!! Down syndrome support group by providing administration support and a free place to hold meetings.

We also continued to provide free premises for Willow Learning for Life to run their sessions 2 days a week during term time.

We worked with their members to deliver training sessions to medical staff at the Croydon University Hospital as well as cooperating on other joint activities.



We provide a base for Croydon People First to operate from and hold their meetings in, and provide facilities for the Council to provide their established 'Play and Time Out' playgroup for disabled children on Saturdays and during school holidays.

We are aware we will be facing some unknown challenges in during 2020 and 2021. We will fully involve our members as we develop our plans.

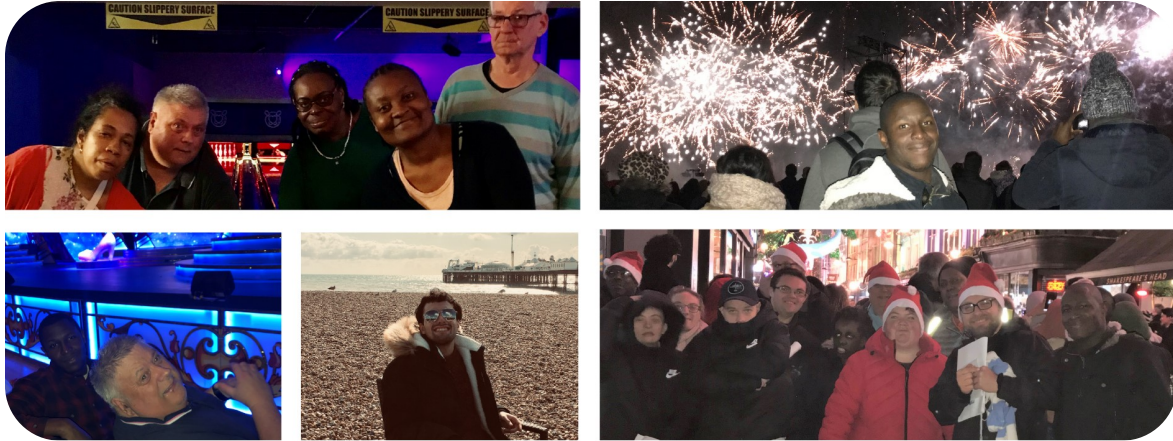
## **Active Lives**

We worked with our colleagues in Croydon Council in the development of strategies geared towards giving opportunities for people with a learning disability to be supported in the community throughout the whole week, not just between 10 and 3 at a day service. We wholeheartedly support the idea of giving people with a learning disability a choice in what they would like to do and when.

Therefore, in August 2019 we launched 'Active Lives,' a programme of exciting evening and weekend clubs and trips including: Pub Club, Keep Fit & Dance, Cinema Club, Snooker Club, trips to see musicals in the West End, a trip to Leicester Square for St Patrick's Day celebrations, a trip to see Wrestling All Stars at Fairfield Halls and many other brilliant activities.

## from Alan Avis, continued...

### Active Lives (continued)



Members were able to use their direct payments to purchase these sessions and the programme became very popular over its first 6 months. By the start of March 2020 sessions were sold out and we were planning for additional capacity. It was so disappointing and frustrating that later in the same month we had to drastically curtail activities as Covid-19 took hold.

### **Clubs @ Leslie Park**

In May 2019 Amanda Stewart, who managed Clubs @ Leslie Park for over 10 years, left us and started a new independent venture supporting people with learning disabilities. Many of our members still see Amanda and are benefitting from having more activity and support choices.

In December 2019 Kat Edwards joined us as the new manager. Kat has taken the development of Clubs @ Leslie Park to the next level. The range of Clubs on offer to members include many new clubs, the ideas for which have been coproduced with members. These include a Business Club, Choir, Tai Chi, Zumba, a News Club, and Photography Club, as well as the old favourites such as Football Club, Drama with SAVVY theatre and Dance with Malookoo Dance.

The service has a renewed focus on empowering our members to be healthy, happy and independent. Membership has increased and by March 2020 we were at full capacity every day of the week.

The staff team have been assigned additional roles which play to their strengths and have been given opportunities for growth and learning. The team has responded brilliantly to this.

We have also introduced 2 'inset days' a year for staff training and development, the 1st of these involving a training day with our very own Chairperson James who delivered a session on person-centred support.

It is not just the staff who have had opportunities for growth, but members too. 'Mencap Mentors' now lead and support in areas such as recycling, activity planning, activity delivery and refreshments.

Clubs @ Leslie Park has been able to strengthen its position in Croydon through creating links with other providers and working alongside council run services. Zumba, Tai Chi, and Yoga Clubs for example have transferred over to the council-run Cherry Hub, to open up activities to more people with a learning disability in the borough.



## from Alan Avis, continued...

### **Chill and Chat**

This invaluable group has continued to be held at Malling Close and Shirley Children's Centres. Sadly, Maureen left her role as Deputy Coordinator due to illness in February 2020. Everyone was so sad to see Maureen leave us and continue to miss her. Her amazing work and the support she provided to parents over the years has been life changing for so many. We had a party to celebrate Maureen's time with Croydon Mencap and to thank her for everything she has done for the parents and children who attend Chill and Chat.



Prior to finding a replacement for Maureen, which was no easy task, Chris continued to expertly run the groups with support from our team and her husband Malcolm who took on a voluntary role with us. Chris has continued to offer a friendly ear and very importantly, a safe space for parents to support each other through the challenges and joys that accompany parenting a child with additional needs.

### **Monday Night Social Club**

In January 2019, we were so pleased that the ever-popular Monday Night Social Club was able to move from New Addington Community Centre to the brand-new purpose-built leisure centre next door. While we had grown fond of the Community Centre, it had become very run down.



Members and staff alike were in awe of the new space which is fully equipped with a projector, community kitchen, and partitions so the space can be divided up. We can host up to 300 people in the hall which is very helpful as the number of members attending Monday Club continues to increase.



Activities over the last year included favourites such as bingo, karaoke, the Christmas disco, fancy dress competitions and dance sessions. Thanks to the impressive efforts from the brilliant staff team led by Aliye Beaton, the Monday Night Social Club continues to be a popular staple in the Croydon Calendar.



Sandra

### **The Saturday Club**

Led by Sandra until she handed over to Rory in February 2020, the Saturday Club has continued to provide fantastic person-centred activities for young adults with learning disabilities and autism.



Rory

Taking place at Clubs @ Leslie Park, the Saturday Club staff team support between up to 10 members to take part in a variety of activities including arts and crafts, films, food, music, dance, bingo, and lots more.

## from Alan Avis, continued...



### **Carers Support**

Our Carers Support team have been there throughout this year supporting carers through the challenges and demanding issues they face every day.



Lloyd Thomas joined Sue Payne to form this team in May 2019 and they quickly became a 'go to' for so many in the borough for support with housing, welfare benefits, education, transitions, accessing social care and essential emotional support.



In addition, Sue completed 100 carers' assessments to see what could be done to make carers' demanding lives easier.



Throughout this year carers were welcomed to several events including a mindfulness and well-being session, a trip to Ruxley Manor, "plant a bulb," a fantastic river boat trip, the traditional Christmas lunch and various coffee mornings.

It has been lovely to see vital friendships blossom for those attending the sessions.

## Treasurer's report on the year to 31<sup>st</sup> March 2020

I give below an abbreviated financial report on the 2019-20 year. All figures are to the nearest thousand pounds. Full statutory accounts are available from the office on 020 8684 5890. The results for the year showed a deficit of £75k compared with a deficit of £10k in the previous year.

<b>Income</b>	<b>2019-20</b>	<b>2018-19</b>
	<b>£'000</b>	<b>£'000</b>
Income from donations and legacies	10	14
Income for support services and projects	462	413
Income from renting out office space	14	14
Investment income	7	6
<b>Total income</b>	<b>493</b>	<b>447</b>
<b>Expenditure</b>		
Operations	294	234
Drop in services	9	9
Leslie Park	214	190
Active Lives	27	0
Other support services and projects	24	24
<b>Total expenditure</b>	<b>568</b>	<b>457</b>
<b>Surplus / (deficit) for the year</b>	<b>(75)</b>	<b>(10)</b>
Funds held at start of year	905	915
<b>Funds held as at 31 March</b>	<b>830</b>	<b>905</b>
<b>Where the funds are held:</b>		
Bank balances	788	834
Leasehold improvements	0	11
Equipment – Including Minibus	14	19
Net assets / (liabilities)	28	41
<b>Total assets</b>	<b>830</b>	<b>905</b>

Total income grew by 10%, which was driven by the continued growth of the social clubs and activities run by the charity, as well as new initiatives such as Active Lives.

Our key funder continues to be the London Borough of Croydon, from whom 88% of non-legacy income came in 2019-20 – we are grateful for their ongoing support.

Core activities such as Clubs @ Leslie Park, the Monday Night Social Club, The Saturday Club and Carers Advice and Support (CASS) continued throughout the year, and a new Active Lives programme also started up during the year.

The overall deficit of £75k for the year was funded by available reserves, and the charity still has a healthy balance of funds available for future charitable activities.

We continue to look for new funding sources to maintain and develop services and projects, and the ongoing efforts to raise funds by our members and staff are as always very much appreciated.

Assistance in our efforts to raise funds and improve the current services offered to our client base, and to develop new ones, is always most welcome.

**Croydon Mencap Ltd  
Portland House  
678 London Road  
Thornton Heath  
CR7 7HU**

Registered charity no. 1073063

Tel: 020 8684 5890  
Email: [info@croydonmencap.org.uk](mailto:info@croydonmencap.org.uk)  
Website: [www.croydonmencap.org.uk](http://www.croydonmencap.org.uk)

